

Duke Wind and Chl comparison

2/15/2008

1. Monthly climatology PAR, Chl, and Wind
2. Monthly x,y images of Chl, and Wind
3. Monthly x,y images of PAR

Data

Wind data

QuikCAST: 1999-2006 Daily data

ftp://podaac.jpl.nasa.gov/pub/ocean_wind/quikscat/L3/data

Chl & PAR Data

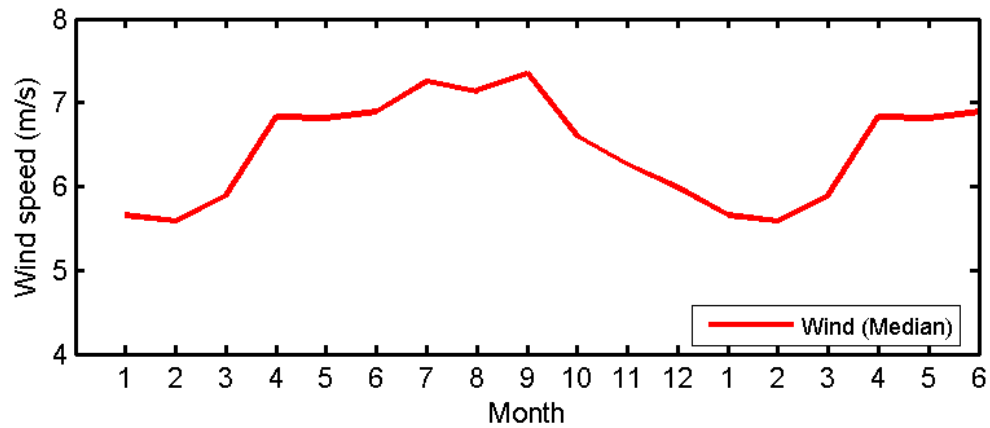
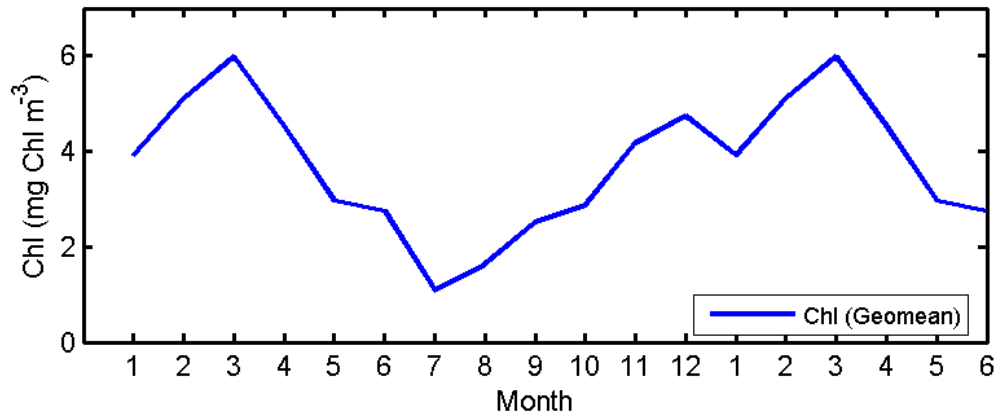
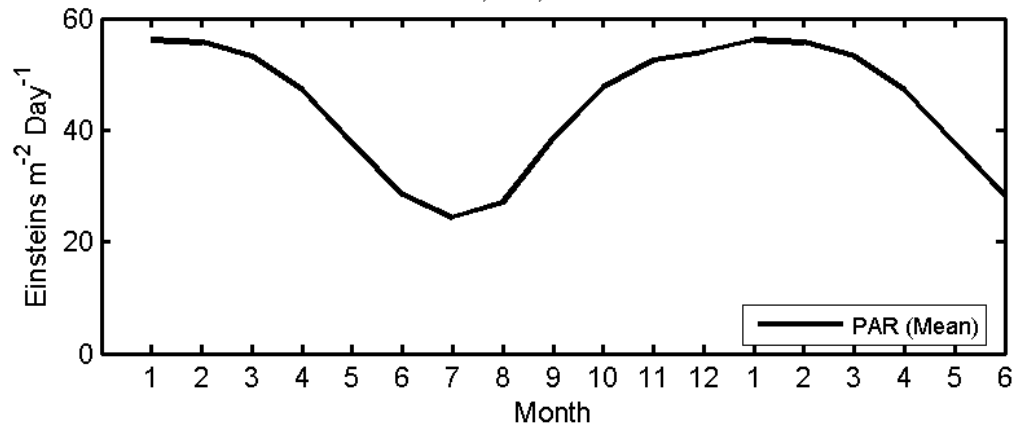
SeaWiFS: 1999-2006 calculated climatology

ftp://oceans.gsfc.nasa.gov/SeaWiFS/Mapped/Monthly_Climatology/CHLO

ftp://oceans.gsfc.nasa.gov/SeaWiFS/Mapped/Monthly_Climatology/PAR

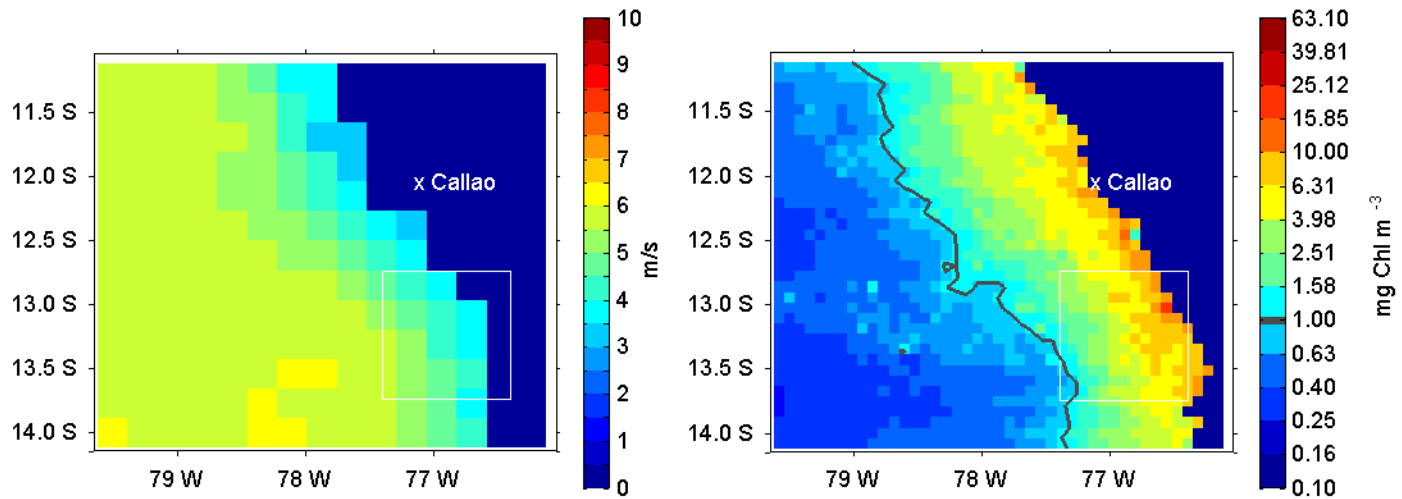
1. Monthly climatology

SeaWiFS PAR, Chl, and QuikSCAT Wind

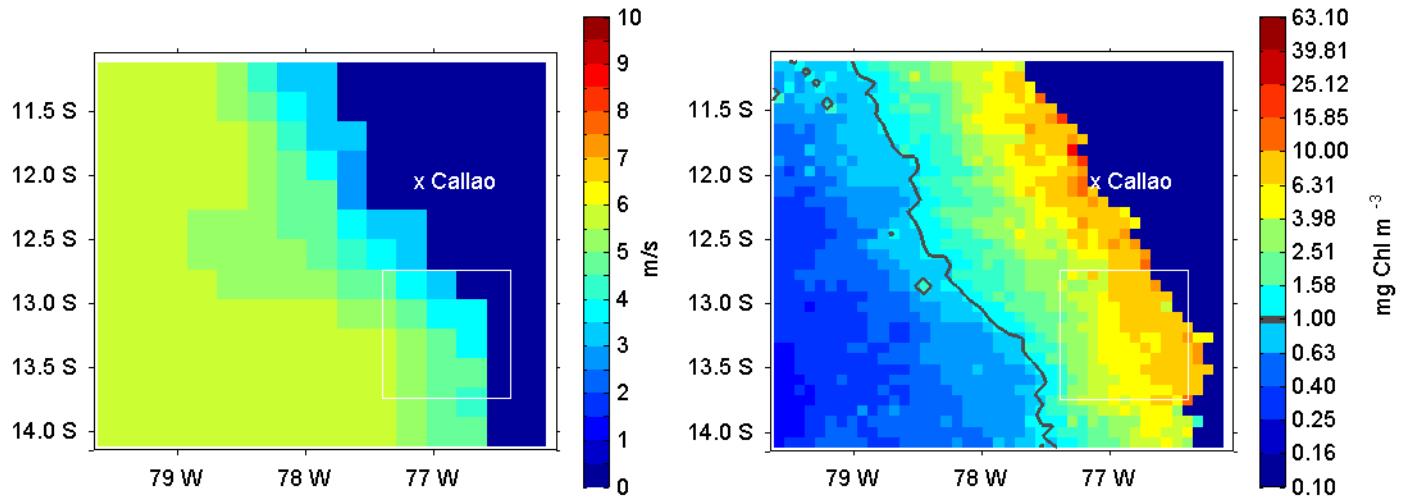


2.Monthly x,y images Wind & Chl

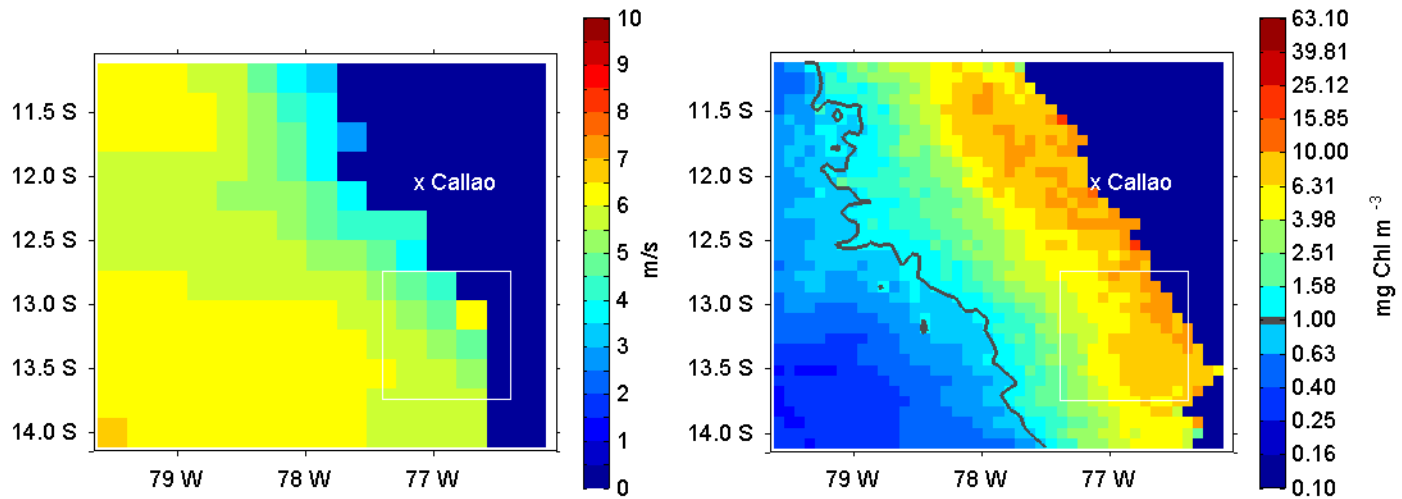
QuikSCAT(winds) -SeaWiFS(chlorophyll) comparison: January



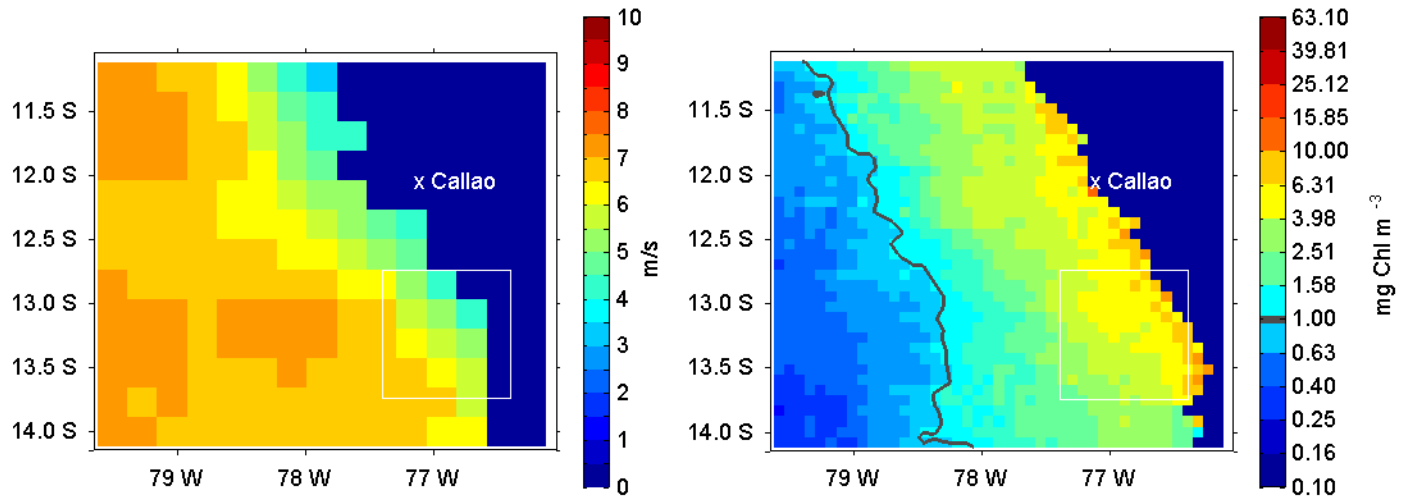
QuikSCAT(winds) -SeaWiFS(chlorophyll) comparison: February



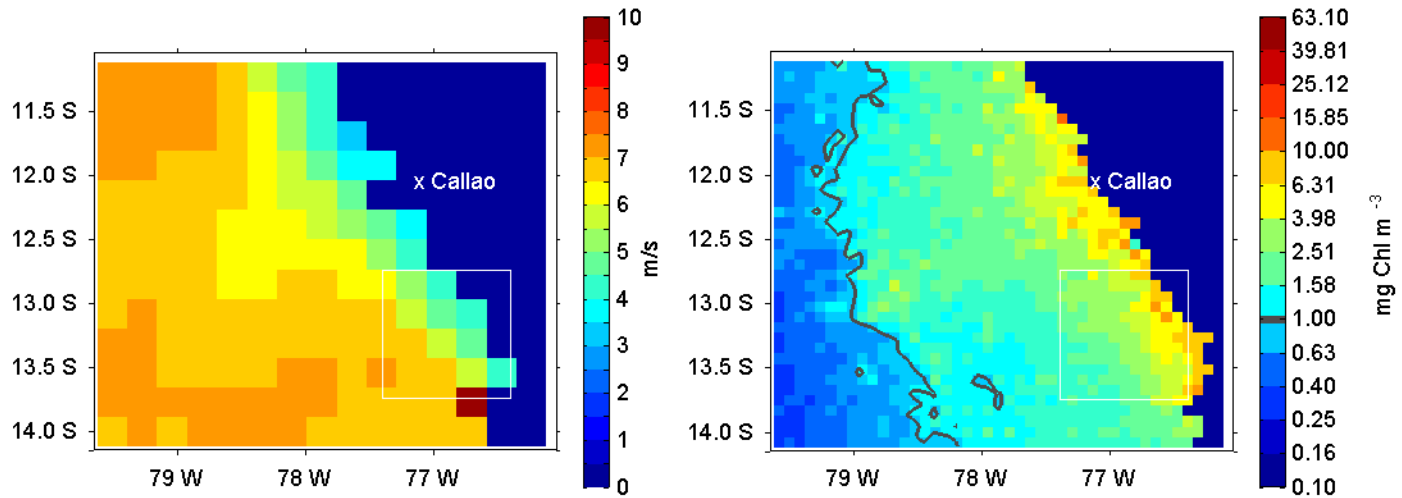
QuikSCAT(winds) -SeaWiFS(chlorophyll) comparison: March



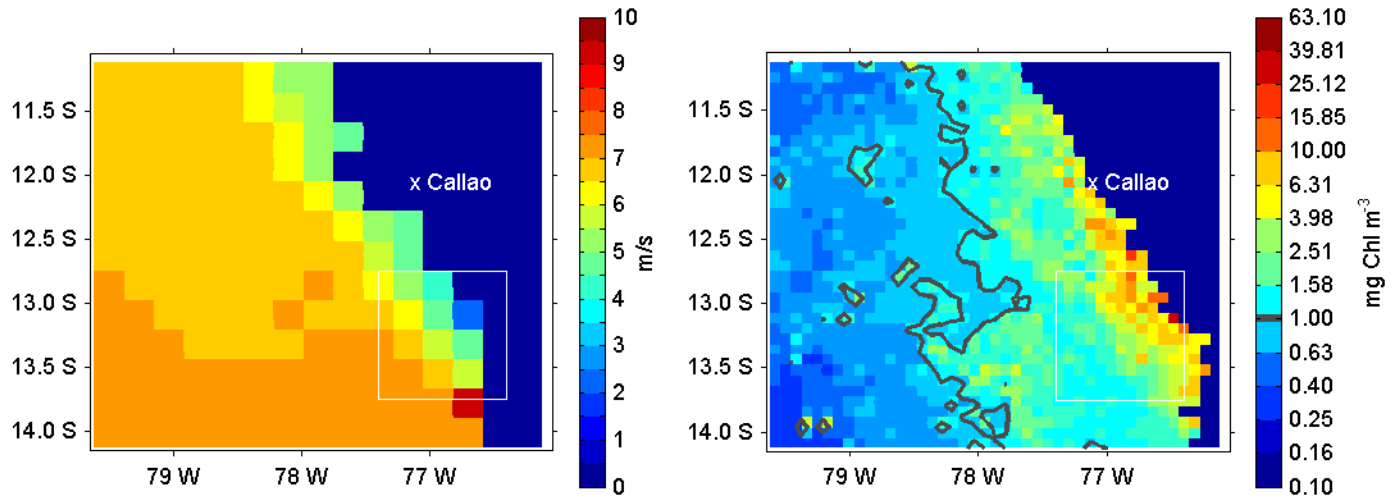
QuikSCAT(winds) -SeaWiFS(chlorophyll) comparison: April



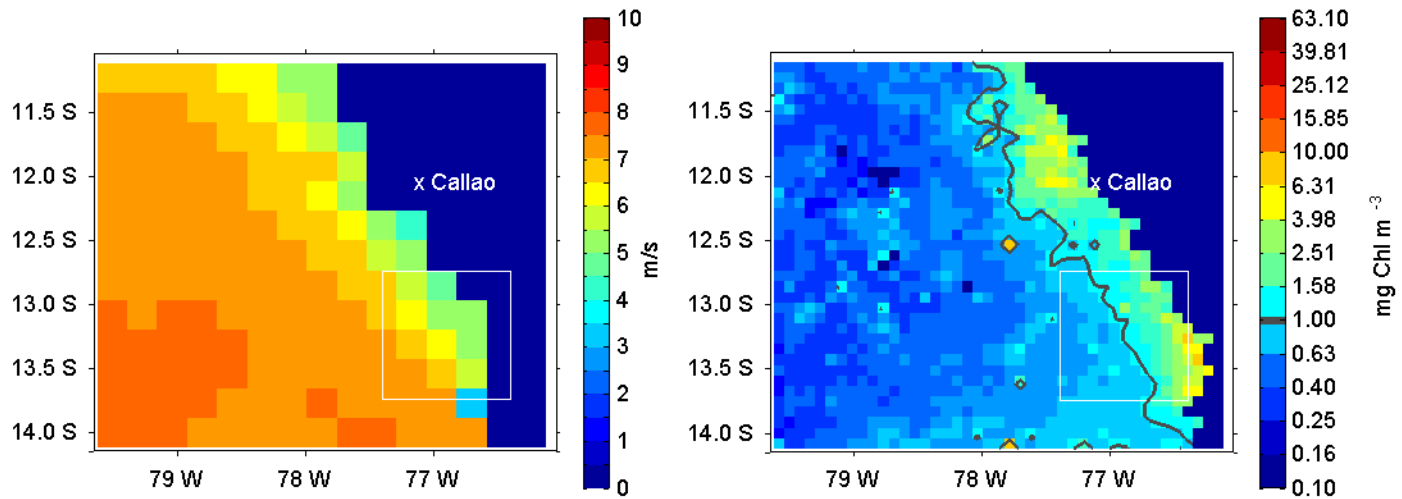
QuikSCAT(winds) -SeaWiFS(chlorophyll) comparison: May



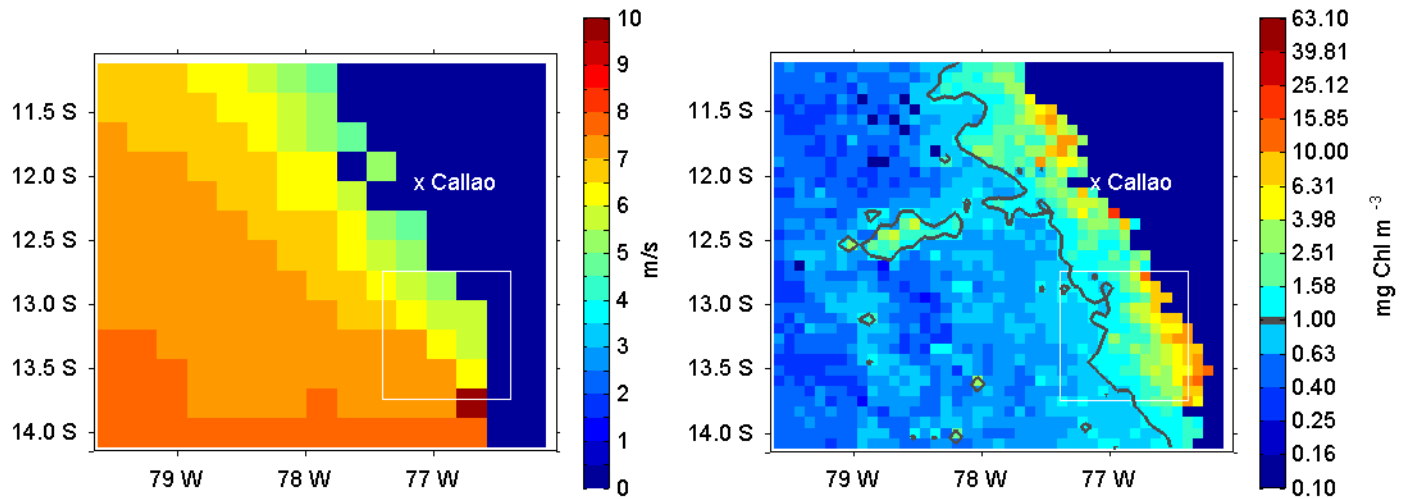
QuikSCAT(winds) -SeaWIFS(chlorophyll) comparison: June



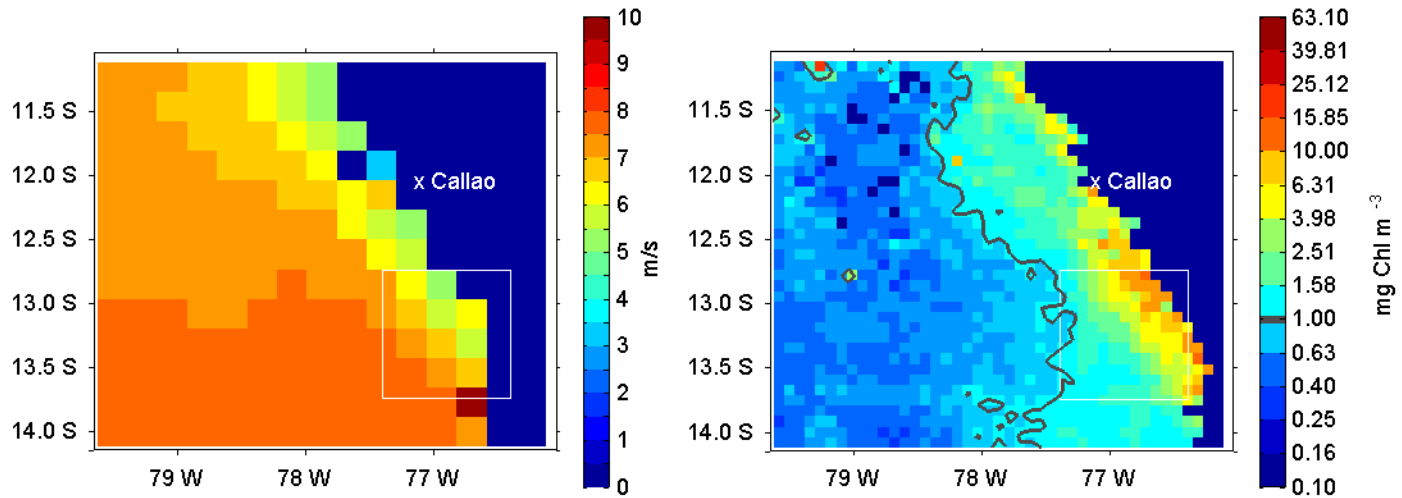
QuikSCAT(winds) -SeaWiFS(chlorophyll) comparison: July



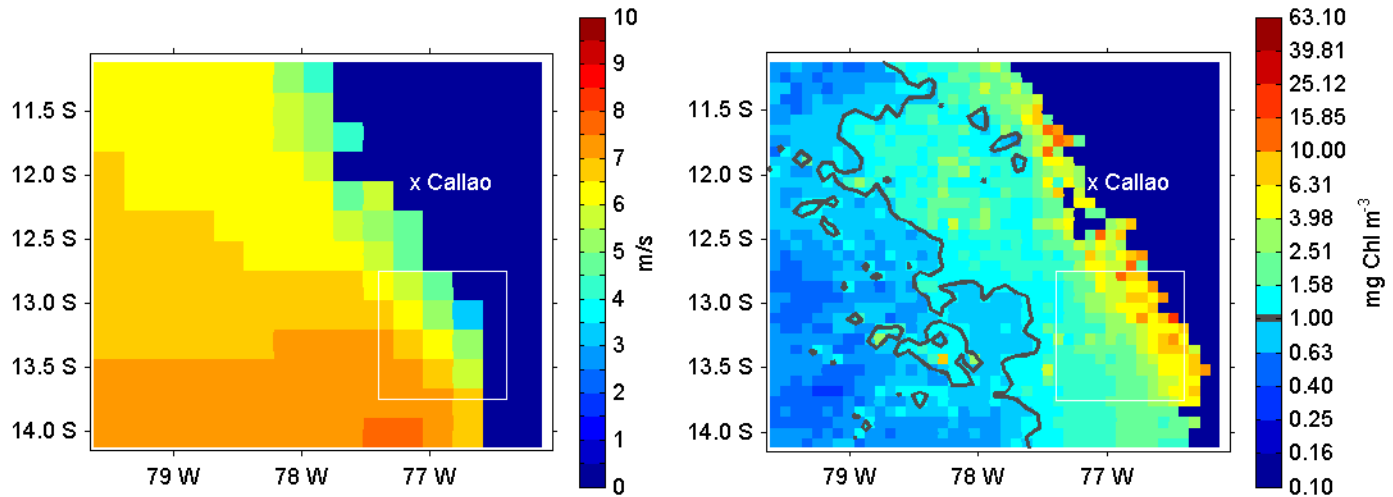
QuikSCAT(winds) -SeaWiFS(chlorophyll) comparison: August



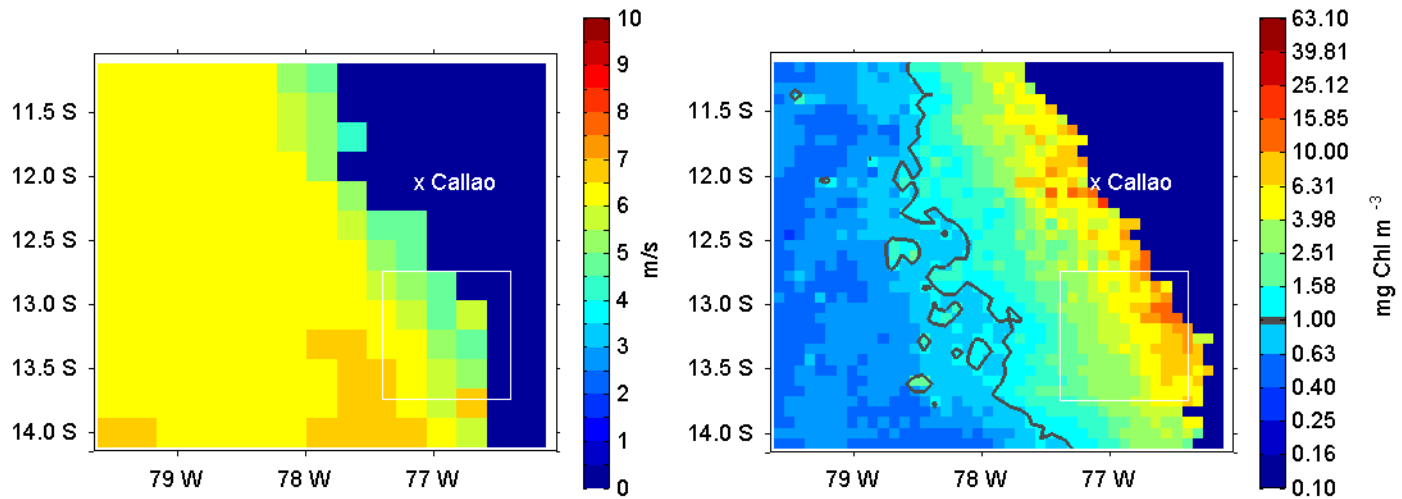
QuikSCAT(winds) -SeaWiFS(chlorophyll) comparison: September



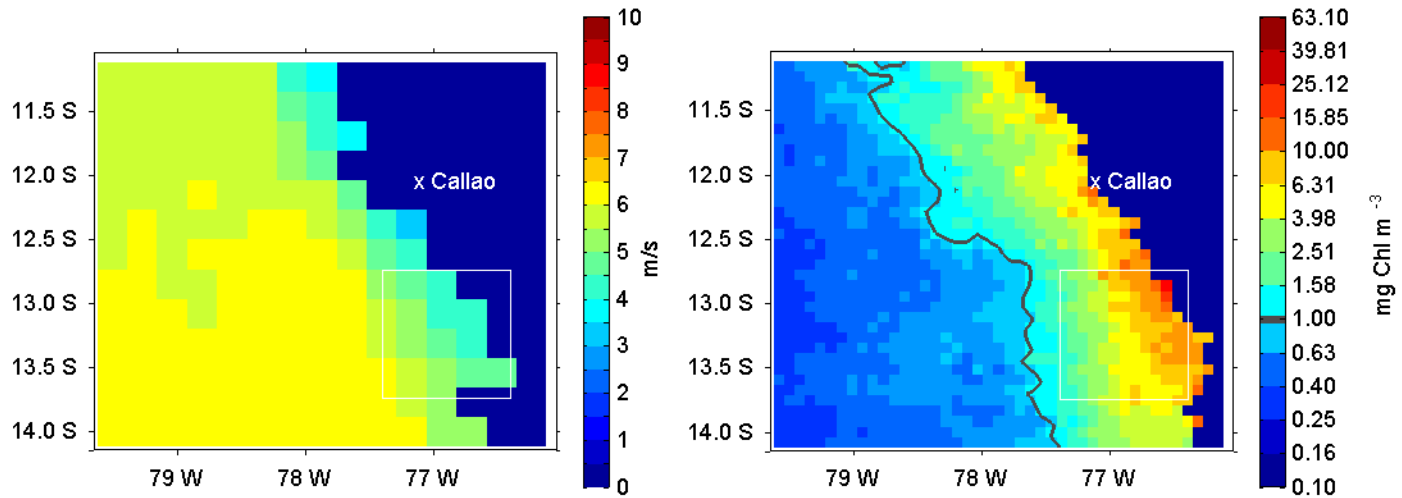
QuikSCAT(winds) -SeaWIFS(chlorophyll) comparison: October



QuikSCAT(winds) -SeaWiFS(chlorophyll) comparison: November

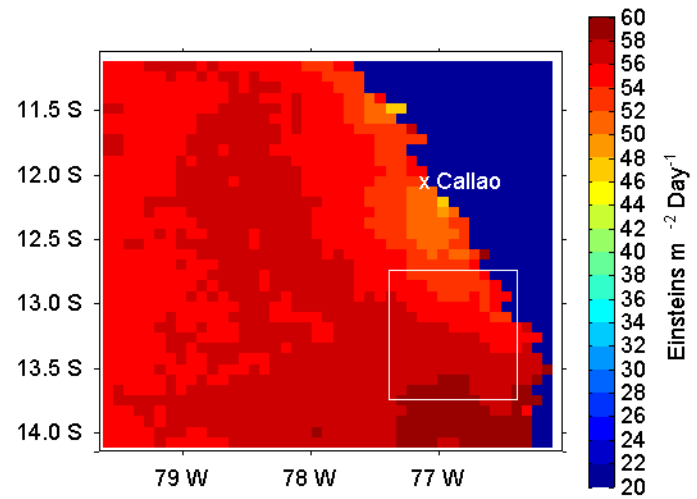


QuikSCAT(winds) -SeaWiFS(chlorophyll) comparison: December

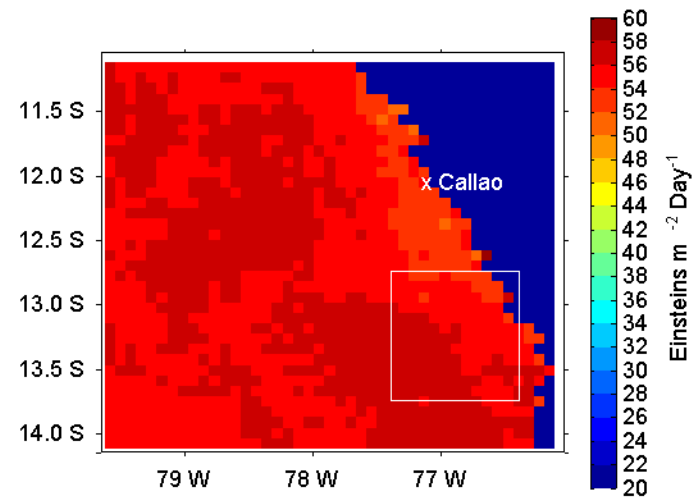


3. Monthly x,y images PAR

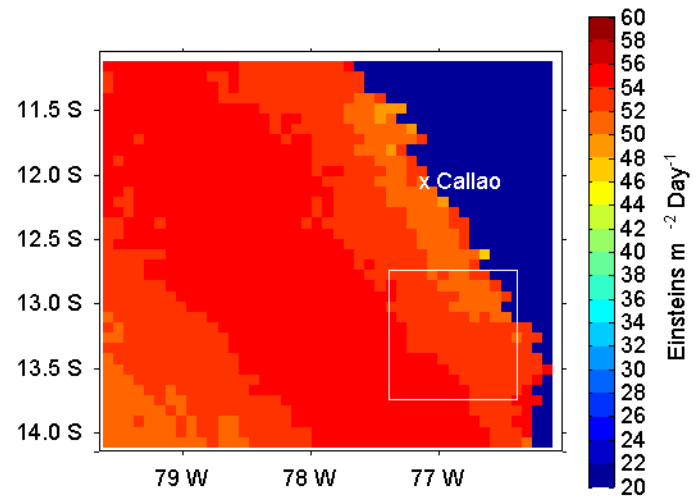
SeaWiFS(PAR): January



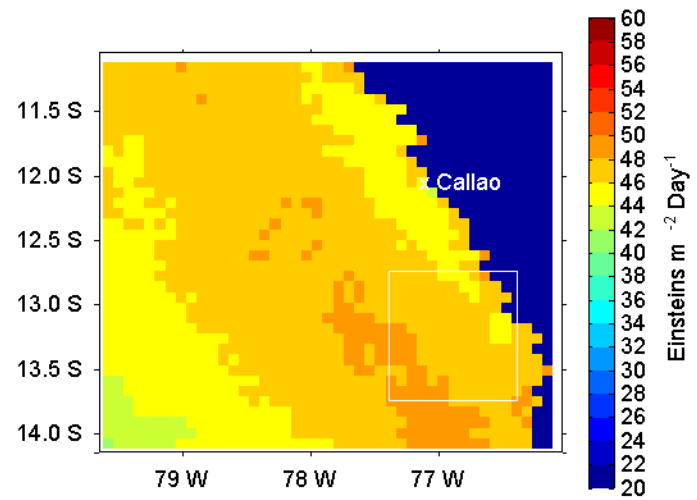
SeaWiFS(PAR): February



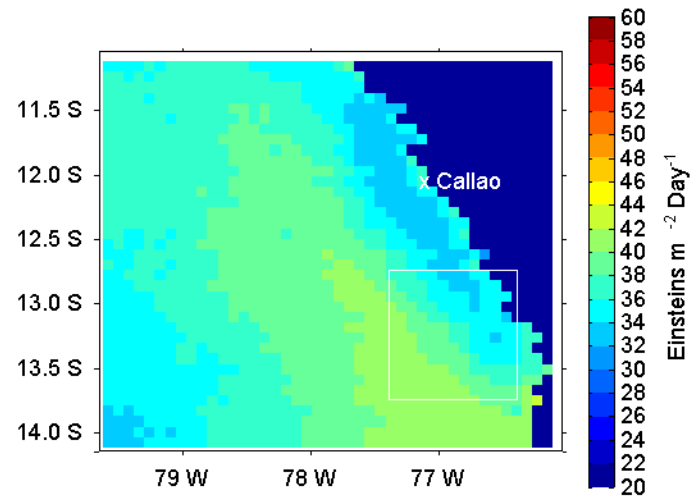
SeaWiFS(PAR): March



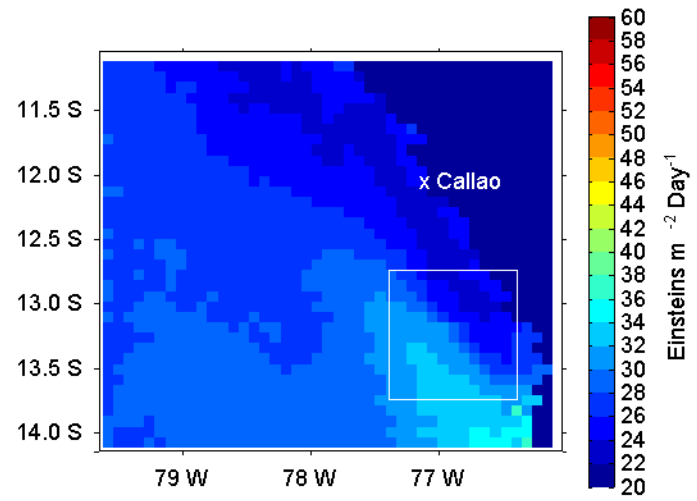
SeaWiFS(PAR): April



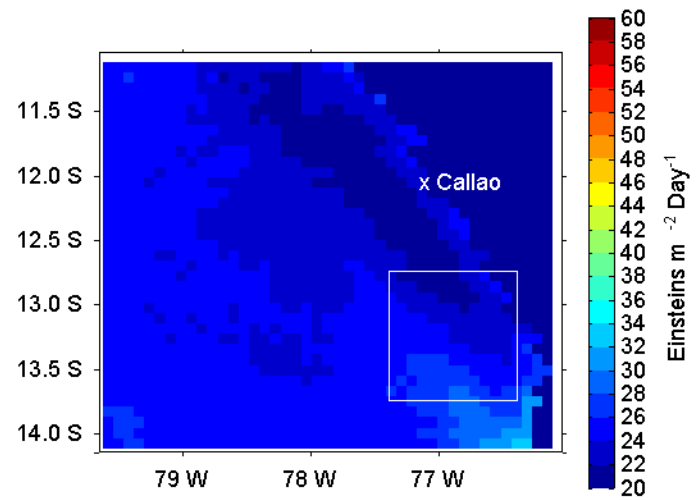
SeaWiFS(PAR): May



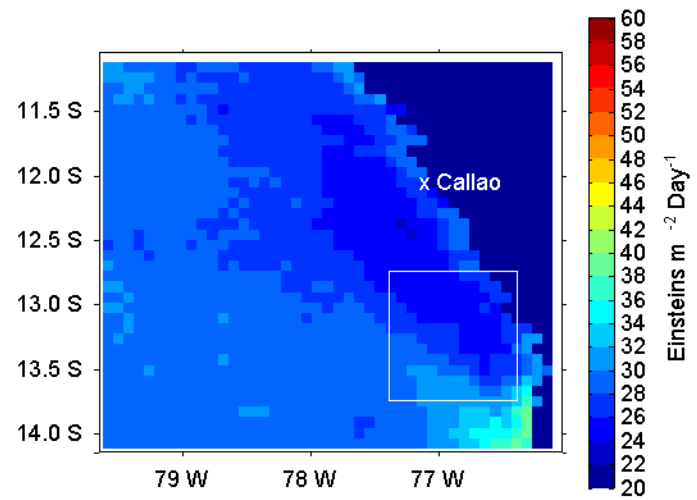
SeaWiFS(PAR): June



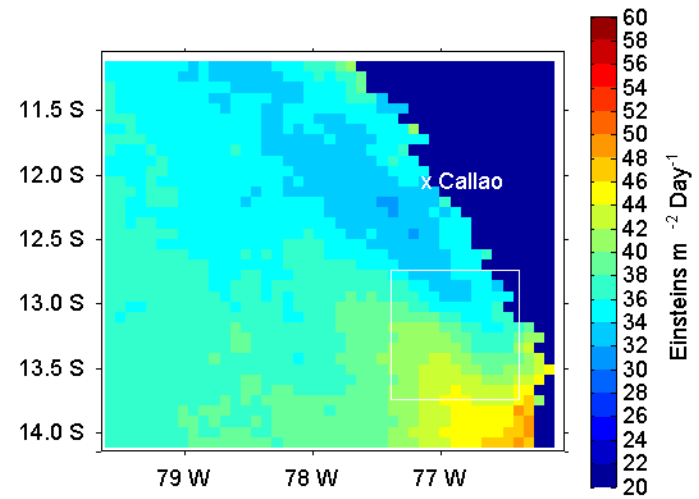
SeaWiFS(PAR): July



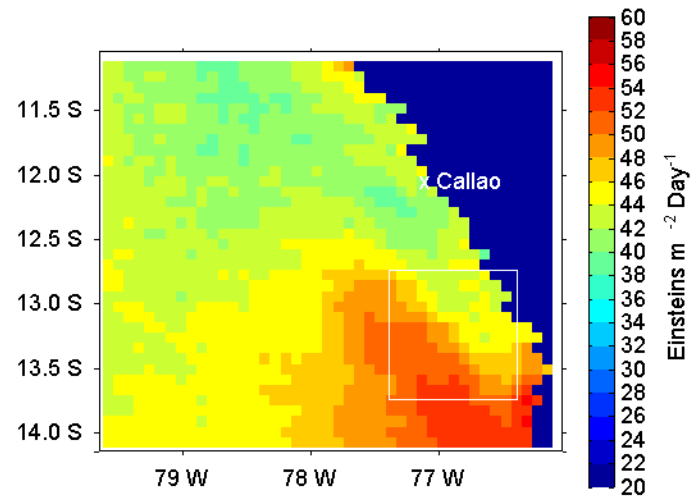
SeaWiFS(PAR): August



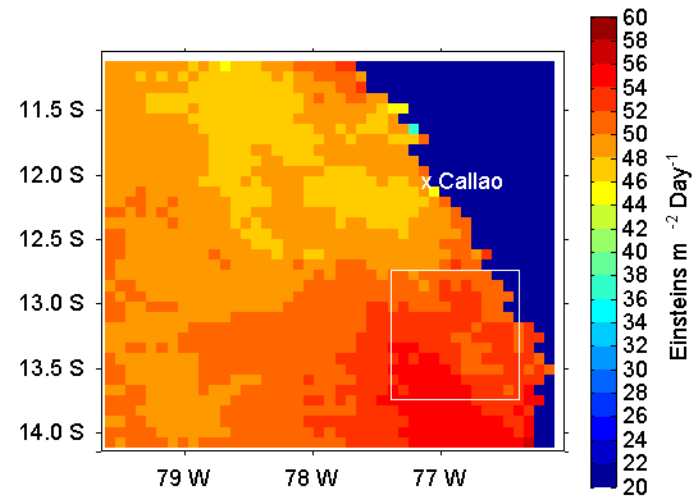
SeaWiFS(PAR): September



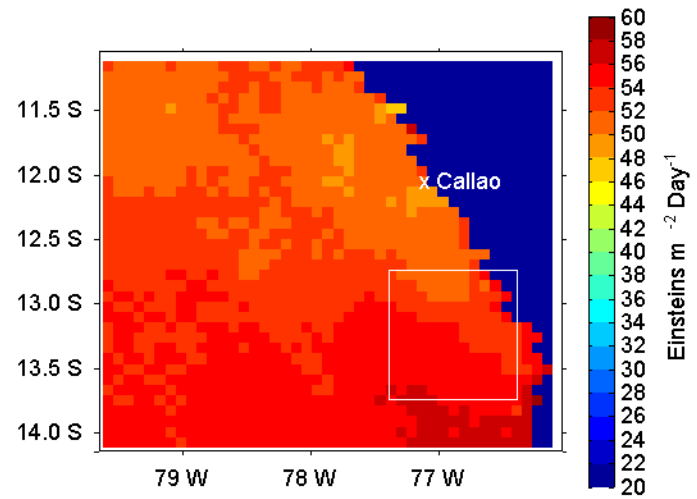
SeaWiFS(PAR): October



SeaWiFS(PAR): November



SeaWiFS(PAR): December



Additional

